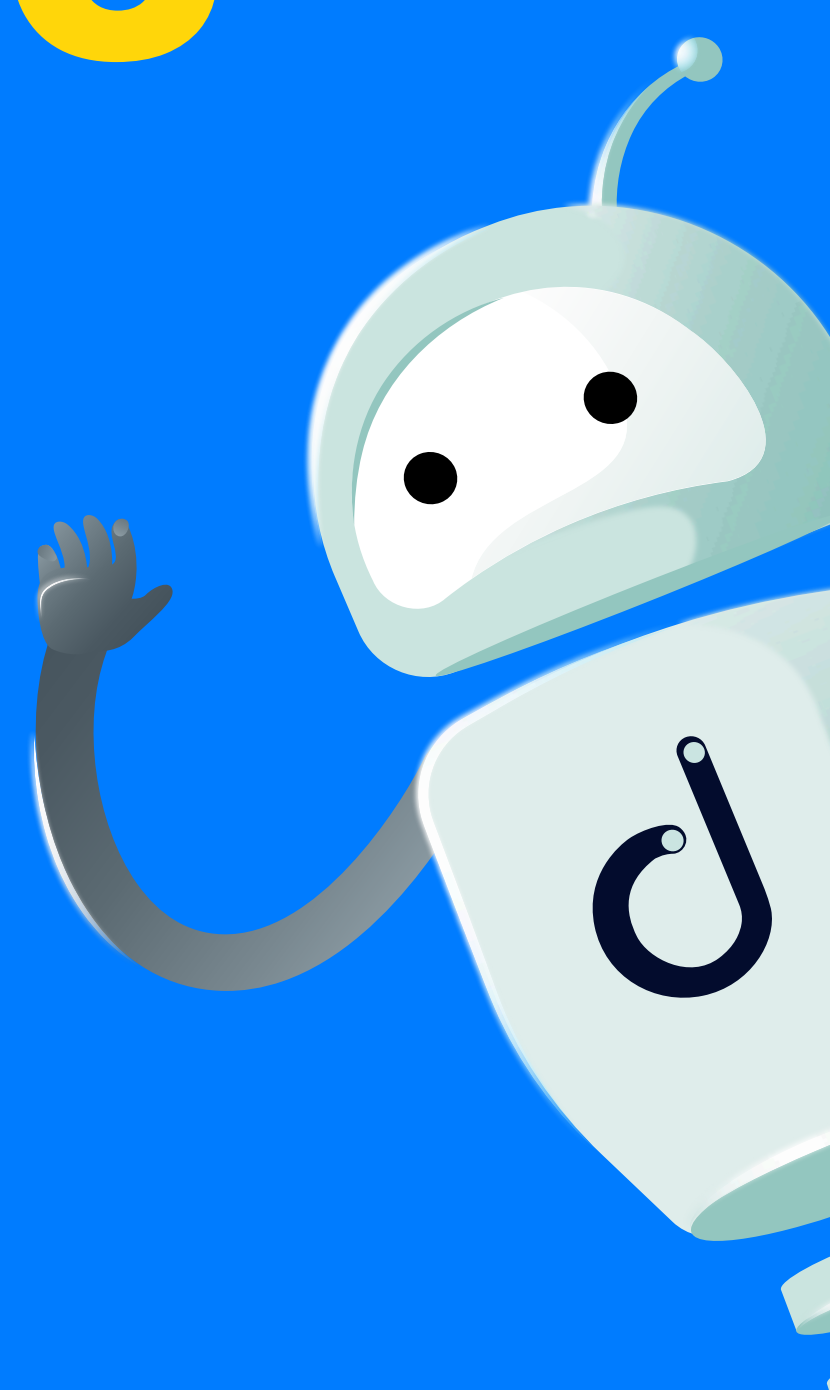


Reactive to Proactive Monitoring in 4 Steps



Baseline visibility

01

Goal:

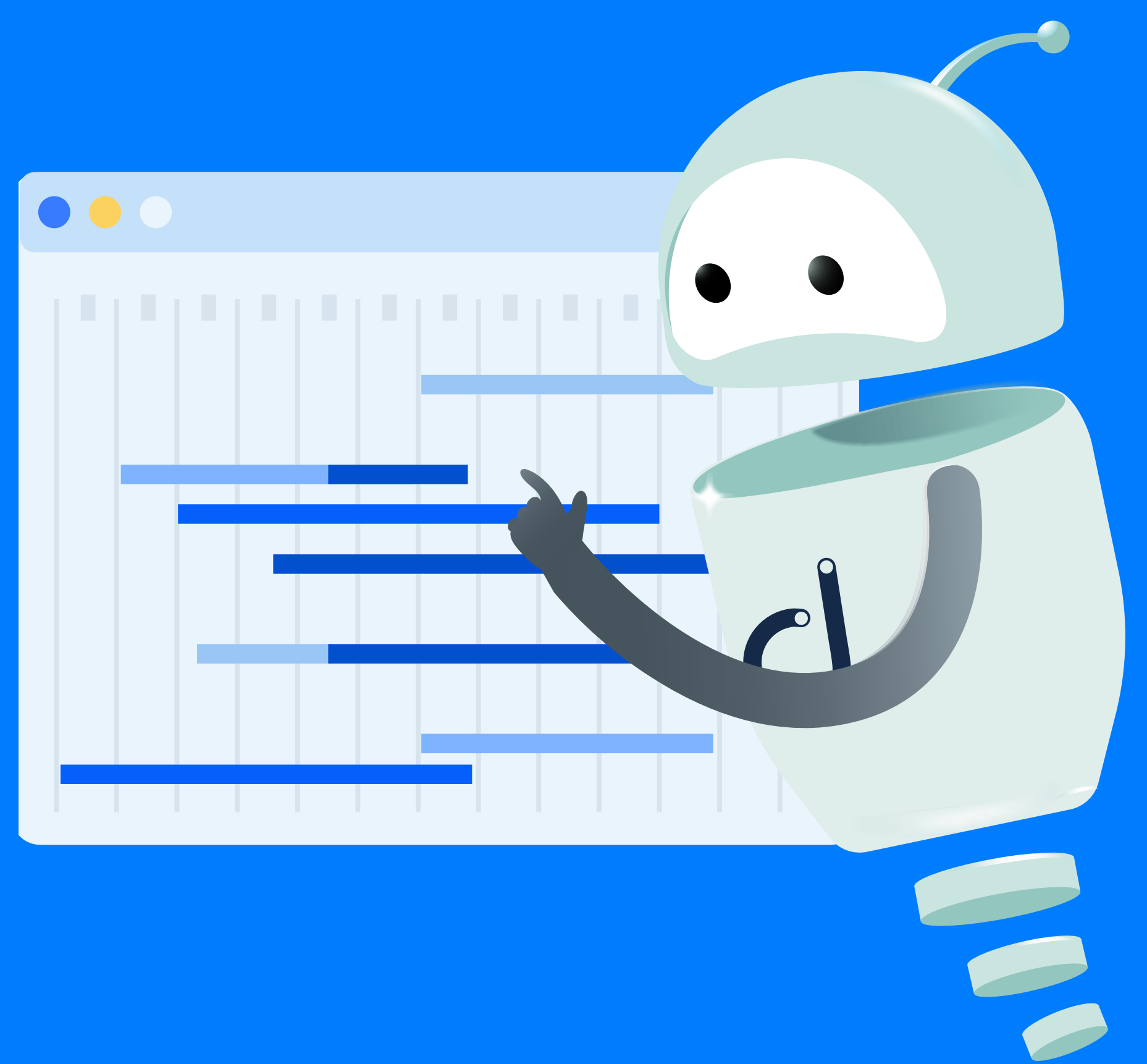
A living, always-accurate inventory of every device, link and dependency.

Quick checks:

Automated discovery scan completes in minutes.

Topology map shows clear Layer-2 / Layer-3 relationships between devices and dependencies for instant triage.

Asset list exports cleanly for compliance and capacity reviews.



02

Critical monitoring

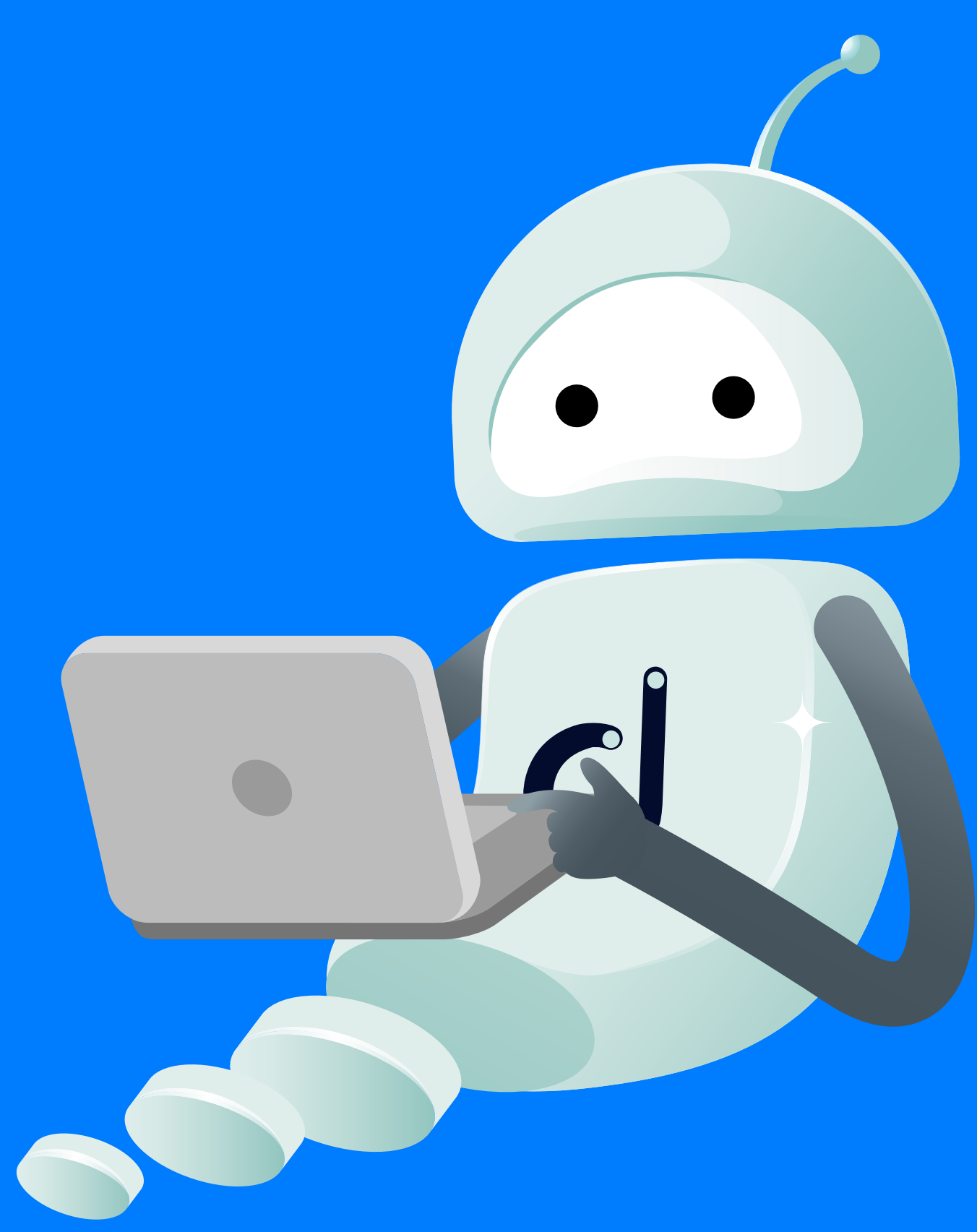
Goal:

Key health metrics are tracked 24 × 7 and alert before users feel pain.

Quick checks:

Monitor device health with SNMP sensors using pre-set templates for real-time metrics like bandwidth, CPU, and temperature.

Technicians act sooner with instant mobile alerts and PSA tickets.



Early warning rules

03

Goal:

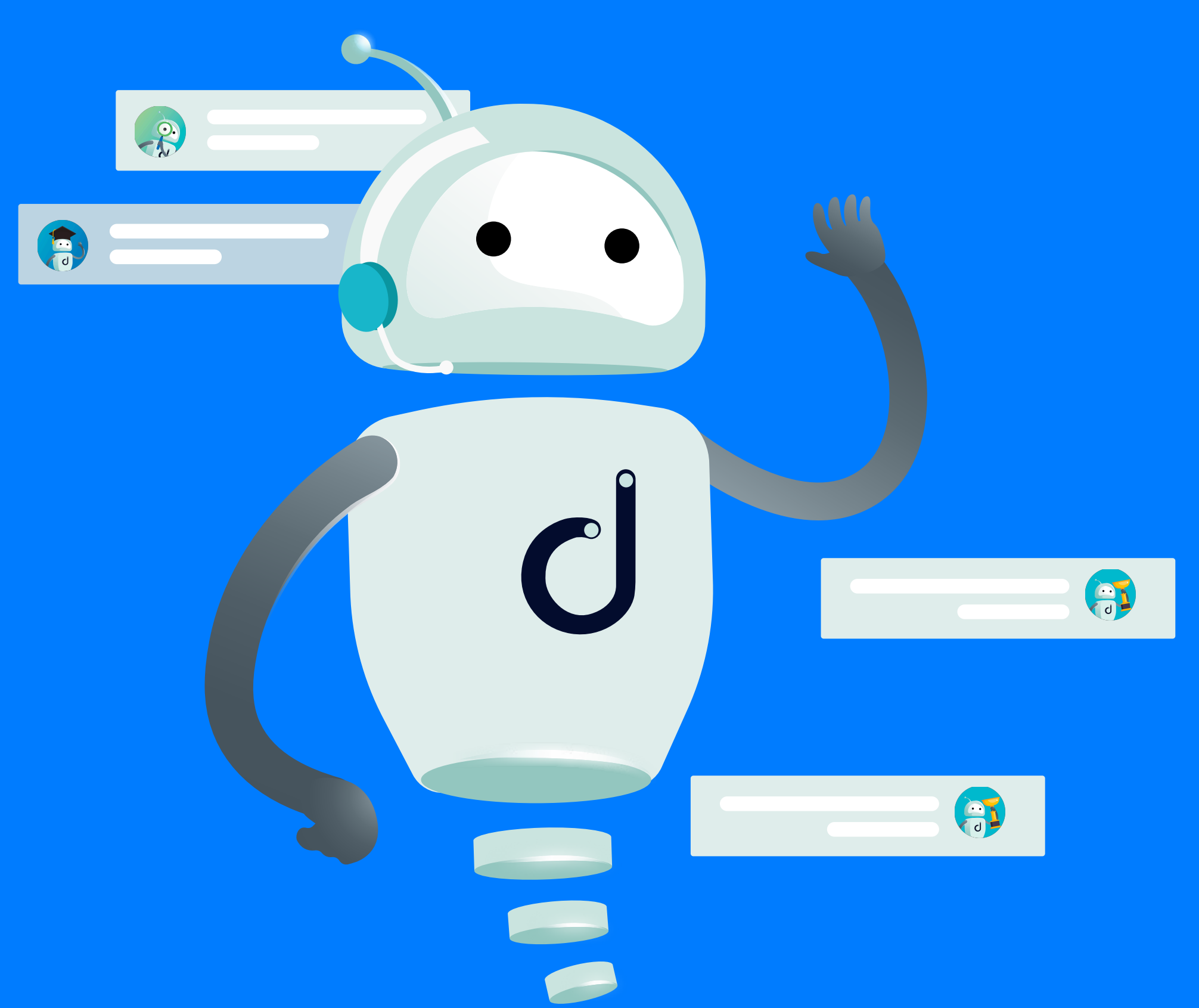
Trends and soft thresholds warn you long before an outage.

Quick checks:

Dashboards highlight bandwidth creep, thermal drift, disk usage and capacity, etc.

Early-warning alerts automatically create context-rich tickets in ConnectWise / Autotask / IT Glue, keeping records documented and actionable without manual work.

Planned maintenance windows fix issues before SLA risk.



04

Integrate & automate

Goal:

Tickets, documentation and resolution all close the loop automatically.

Quick checks:

Alerts sync into ConnectWise / Autotask / IT Glue.

“Resolved” status writes back when the device is healthy again.

One shared dashboard is the single source of truth for ops, security and exec reporting.

